

GXS TrustedLink® for i

Extended Translation Module

Extending the Mapping Features Available in TrustLink for i Visual Mapper

GXS TrustedLink for i (TLi) is the leading data transformation software for the IBM i platform, making it easy to process most standard EDI formats.

But what if your trading partner wants to trade XML (Extensible Markup Language) or flat file document formats?

Extended Translation Module

With the TrustedLink Extended Translation Module you can exchange, track, translate and archive non-EDI formats with the same tool you use for your EDI documents.

TLi removes barriers to on-boarding all your trading partners regardless of B2B capability or standard by supporting XML and flat file translation capabilities. With the ETM and Visual Mapper you can import an XML Schema or DTD document template as well as create XML and flat file documents from scratch to suit your business needs. The module enables your accounting teams and other internal users to view XML documents easily via a web browser. Now you can quickly identify, resolve and act on any electronic transaction.

Case Study: Great Plains Coca-Cola Bottling Company

Great Plains is the seventh largest independent bottler by volume of Coca-Cola in the United States and is located in Oklahoma City, Oklahoma. Ron Martinez is their EDI Coordinator and has used TLi since the "...Premenos days back in 1995."

Great Plains uses the TrustedLink Extended Translation Module to translate XML documents sent and received from their Warehouse Management System (WMS). They created two "...monster" translation formats with "...tons of conditions" which are tied to 20 physical files. Ron commented that the Visual Mapper is "...really amazing and it is quite efficient! We have not found anything else in the country that could handle it!" when talking about the complexity of the mapping needed for their XML documents.

"[GXS] offers great service and is always willing to help." He is comfortable with TLi because he knows GXS is always "...there to support him." One of their network administrators, who was not EDI savvy and whose job it was to get the WMS working, did research and admitted "...that there wasn't any better (translation) software out there and that they (GXS) really know what they are doing."

"If you are running on a System i and need a translator, TrustedLink for i is the one!"



KEY BENEFITS

- Translate XML data to and from your DB2 user files on IBM® i.
- Translate flat file data to and from your DB2 user files on IBM i.
- Import an XML document template from a schema or DTD.
- Convert a standard EDI document into an XML format and send it to your trading partner or display it in a web browser.

The Visual Mapper is "...really amazing and it is quite efficient! We have not found anything else in the country that could handle (the complexity of our XML document)!"

— RON MARTINEZ
PROGRAMMER/ ANALYST
GREAT PLAINS COCA-COLA®
BOTTLING COMPANY



The IBM logo and the Business Partner emblem are trademarks of International Business Machines Corporation in the United States, other countries, or both. The letters "IBM" are also a registered trademark and are often used to identify the corporation and its offerings.

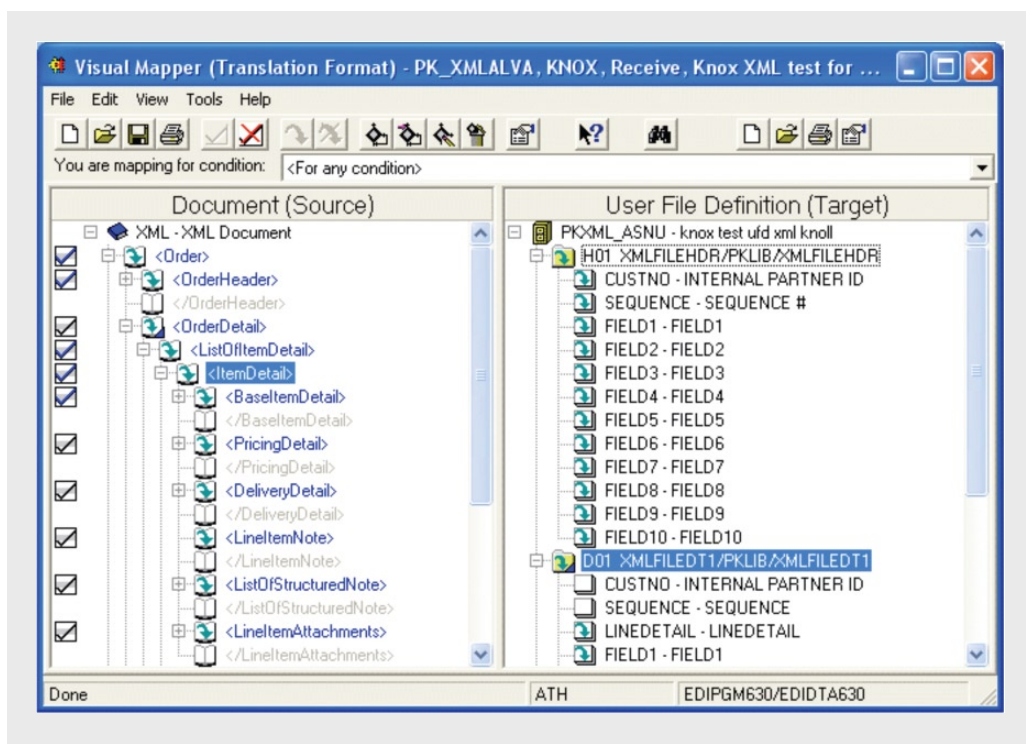
XML Translation Feature

Using TLI's XML Translation, you can:

- Translate inbound XML documents into a user file (DB2) format or outbound user file (DB2) data into XML format
- Define the XML document definition or import an XML template from a schema or DTD when creating the translation format
- Send and receive XML documents using one of the many communication methods already available in TLI including:
 - FTP or HTTPS
 - Communication File Interface
 - E-mail attachments using the XML Exchange network (XE) module
 - GXS BizManager®
- Send a style sheet with the XML data so your partner can see a formatted display of your document in their web browser
- Convert standard EDI documents to an XML format for viewing or sending
- Create and maintain XML headers:
 - System-defined XML headers (cXML and 1SYNC)
 - Modify a system-defined XML header
 - Create and maintain user-defined XML headers

For people who are "...running on a System i and need a translator, (TLI) is the one!"

— RON MARTINEZ
PROGRAMMER/ ANALYST
GREAT PLAINS COCA-COLA®
BOTTLING COMPANY

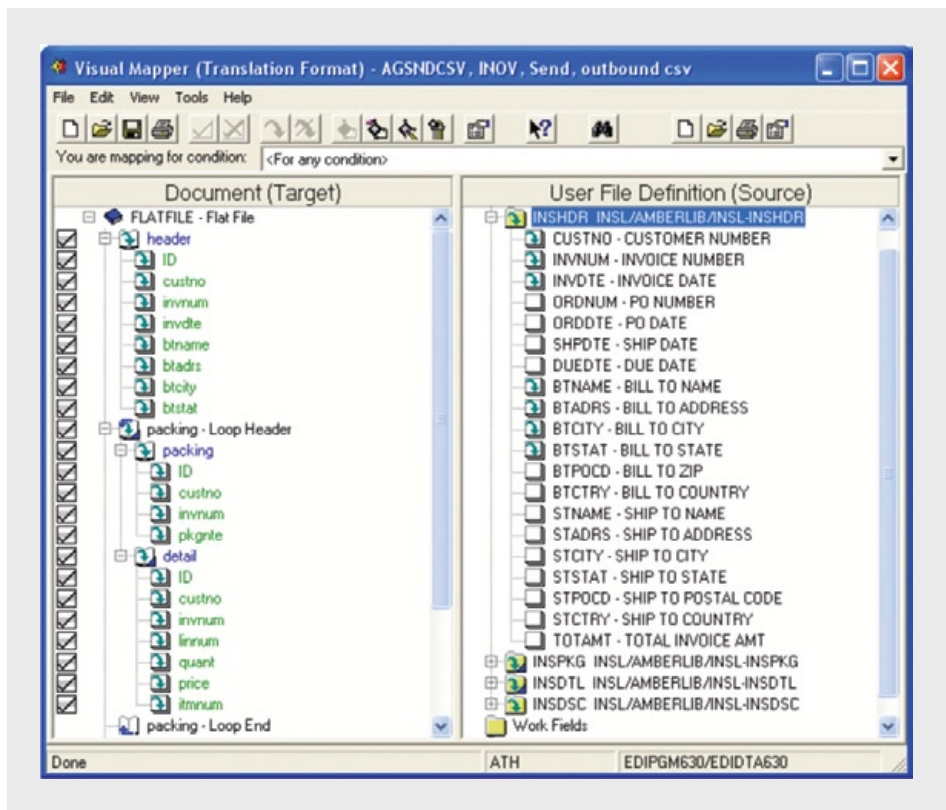


Flat File Translation Feature

With TLI's flat file translation feature, you can process flat files containing repeating structures comprised of rows (records) and columns (fields). Flat files can contain delimited or fixed-length rows which contain delimited or fixed-length columns.

Using flat file translation, you can:

- Translate these flat file types:
 - Delimiter separated values, i.e., comma separated values (CSV)
 - Fixed-length columns with row delimiter
 - Fixed-length row
- Define how you want TLI to route the flat file documents based on the location of the flat files
- Send and receive flat file documents with the Scripted FTP Module. Sample scripts are provided for your use which can be copied and modified



ABOUT GXS

GXS is a leading provider of B2B e-commerce solutions and operates the world's largest and most expansive network of integrated business communities. The company's software and services simplify and enhance businesses process integration and collaboration among networks of trading partners. Organizations worldwide, including more than 75 percent of the Fortune 500, use GXS solutions to extend their supply chain networks, optimize product launches, automate warehouse receiving, manage electronic payments and gain supply chain visibility. Based in Gaithersburg, Maryland, GXS has operations and offices around the world. For more information, see <http://www.gxs.com>, <http://blogs.gxs.com> and <http://twitter.com/gxs>.

NORTH AMERICA AND GLOBAL HEADQUARTERS

9711 Washingtonian Blvd.
Gaithersburg, MD 20878, US
+1-800-560-4347 t
+1-301-340-4000 t
+1-301-340-5299 f
www.gxs.com

EUROPE, MIDDLE EAST AND AFRICA

18 Station Road
Sunbury-on-Thames
Middlesex TW16 6SU
United Kingdom
+44 (0)1932 776047 t
+44 (0)1932 776216 f
www.gxs.eu

ASIA PACIFIC

Room 1609-10
16/F China Resources Building
26 Harbour Road, Wanchai
Hong Kong
+852 2884-6088 t
+852 2513-0650 f
www.gxs.asia.com



About GXS

GXS is a leading provider of B2B e-commerce solutions and operates the world's largest and most expansive network of integrated business communities. The company's software and services simplify and enhance businesses process integration and collaboration among networks of trading partners. Organizations worldwide, including more than 75 percent of the Fortune 500, use GXS solutions to extend their supply chain networks, optimize product launches, automate warehouse receiving, manage electronic payments and gain supply chain visibility. Based in Gaithersburg, Maryland, GXS has operations and offices around the world. For more information, see <http://www.gxs.com>, <http://blogs.gxs.com> and <http://twitter.com/gxs>.